

2018 Ag Markets & the Potential Impact to Your Portfolio

Doug Johnson, Director, Sales

Feb 22, 2018

2018 Ag Markets and the Potential Impact to your Portfolio

“Markets” vs. “Marketing” can be the difference between bottom-line profit or loss. What can Ag lenders do to prepare for this renewal season and provide borrowers with more “value-added” insights?

Mike Pearson, host of Ag News Daily, and Doug Johnson, Director, Moody’s Analytics, will discuss their outlook for the 2018 Ag markets, and expected impacts on your Ag portfolio.

During the webinar, Mike and Doug will offer their perspectives on:

- Ag Markets and your producers' profitability
- Commodity drivers at risk
- How small things can pose significant risks
- Communicating risk “with” – not “to” your producer

Who is Moody's Analytics



Loan Lifecycle Management in One Solution

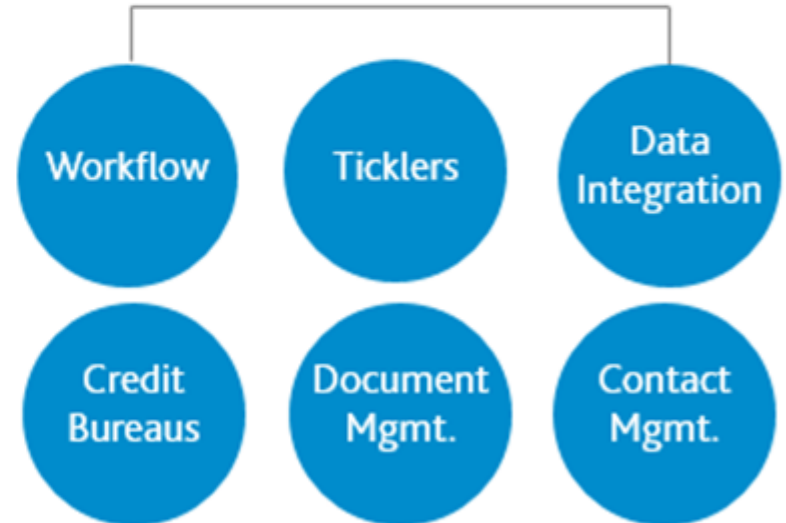


Moody's Analytics SaaS Platform

Product Solutions



Integrated Tools



Presenters



Mike Pearson

Host of “Ag News Daily”



Doug Johnson

Director – Sales Management
Moody’s Analytics Lending Cloud

Driverless Tractors 'ish



Global Production / Yields



Global Production Continues to Increase

Figure 3: Brazil and Argentina Corn Production (Million MT)
2000/2001-2016/2017

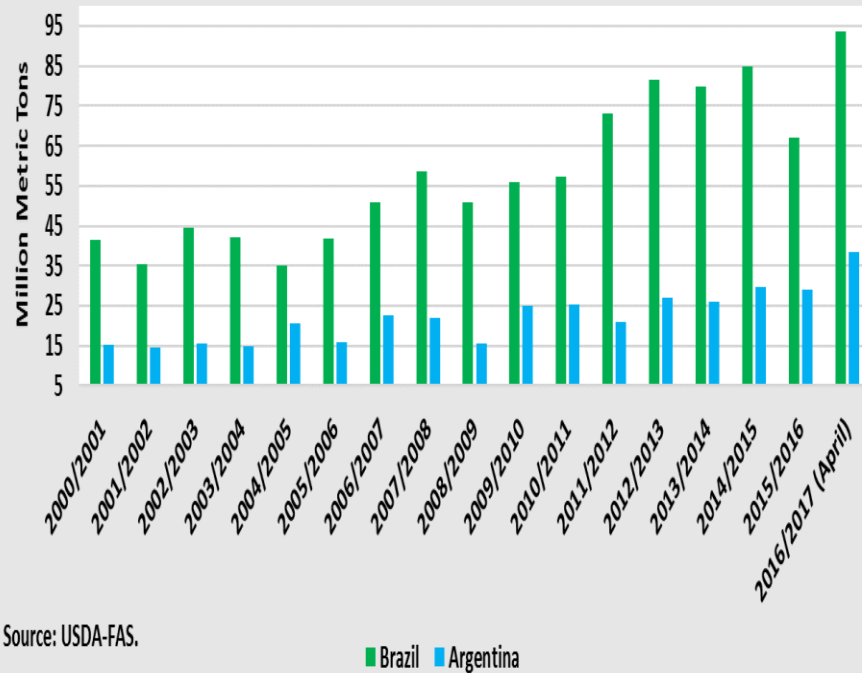
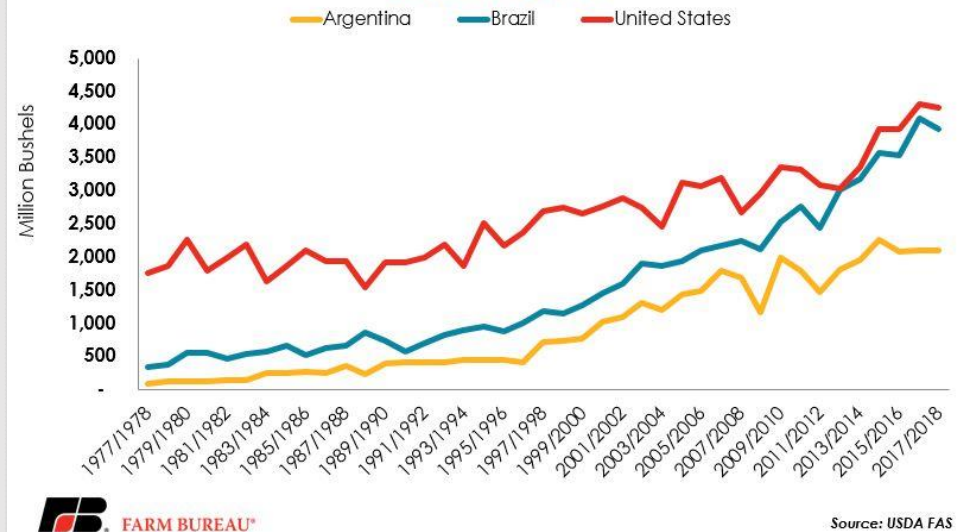


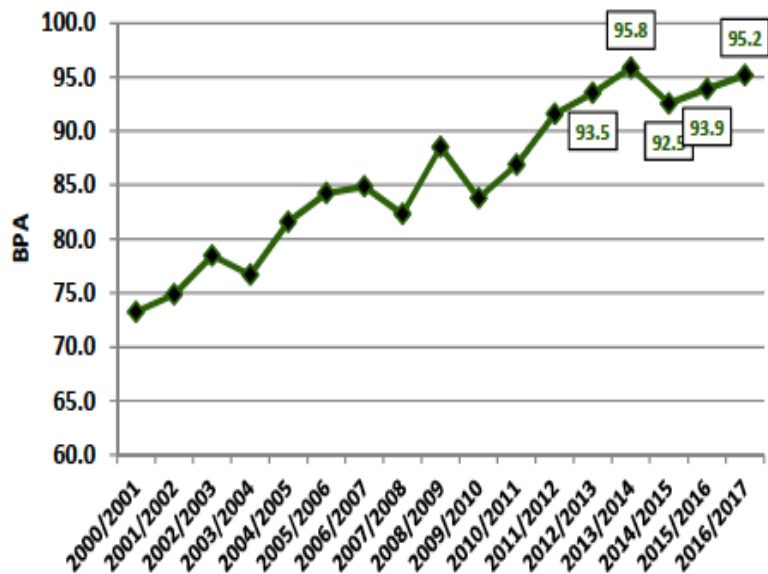
Figure 2: U.S. and South American Soybean Production
1977/78 to 2017/18



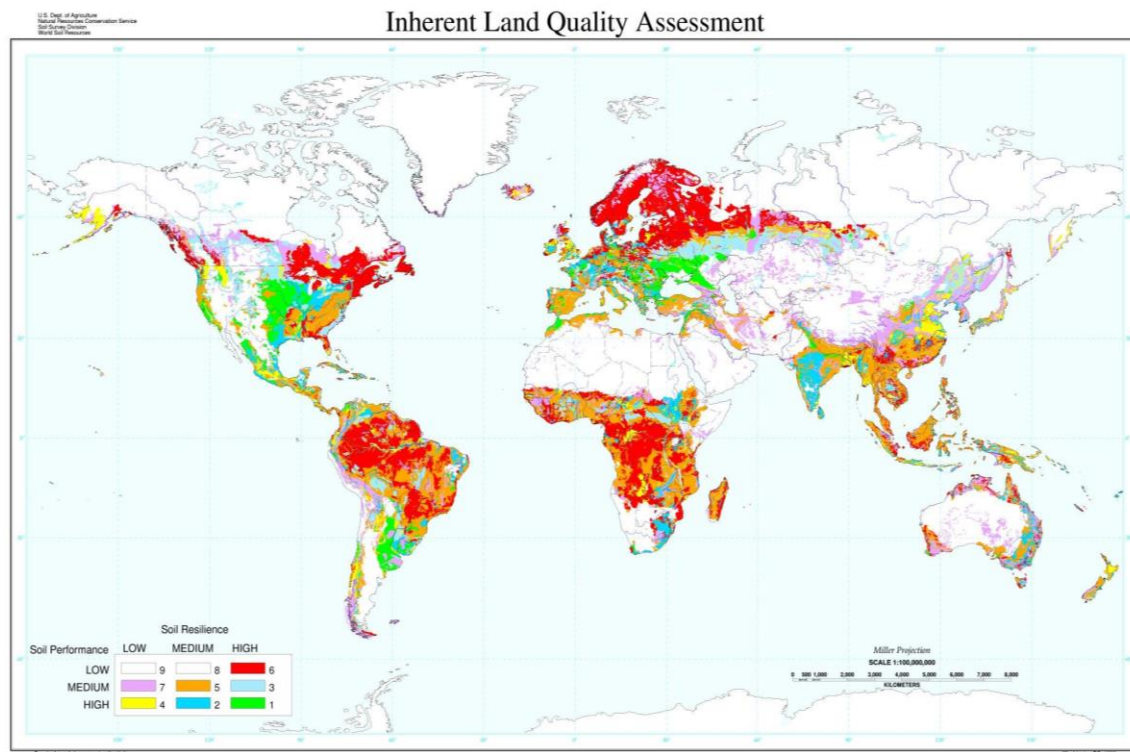
Chinese Production

CHINA CORN YIELD

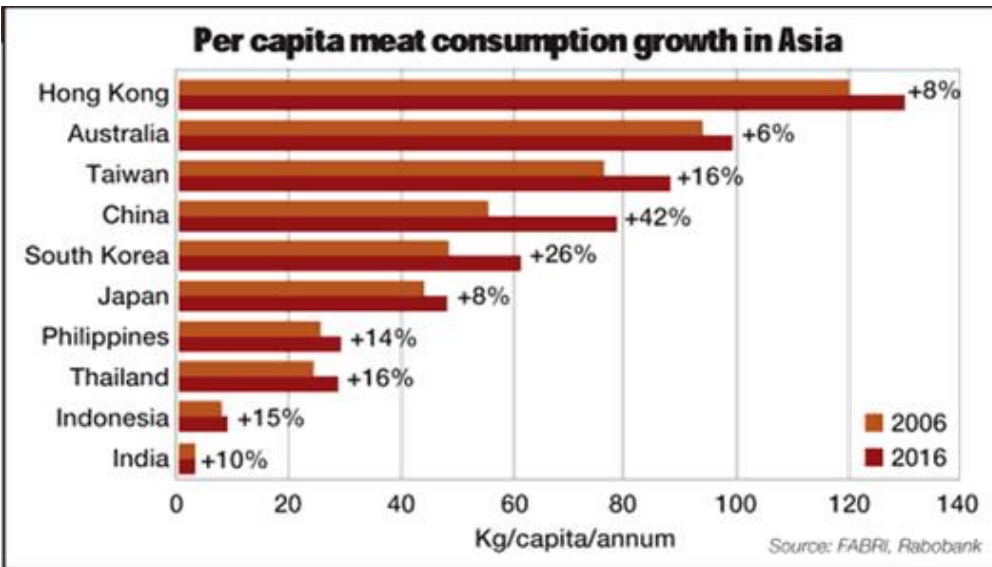
2000/01 - 2016/17



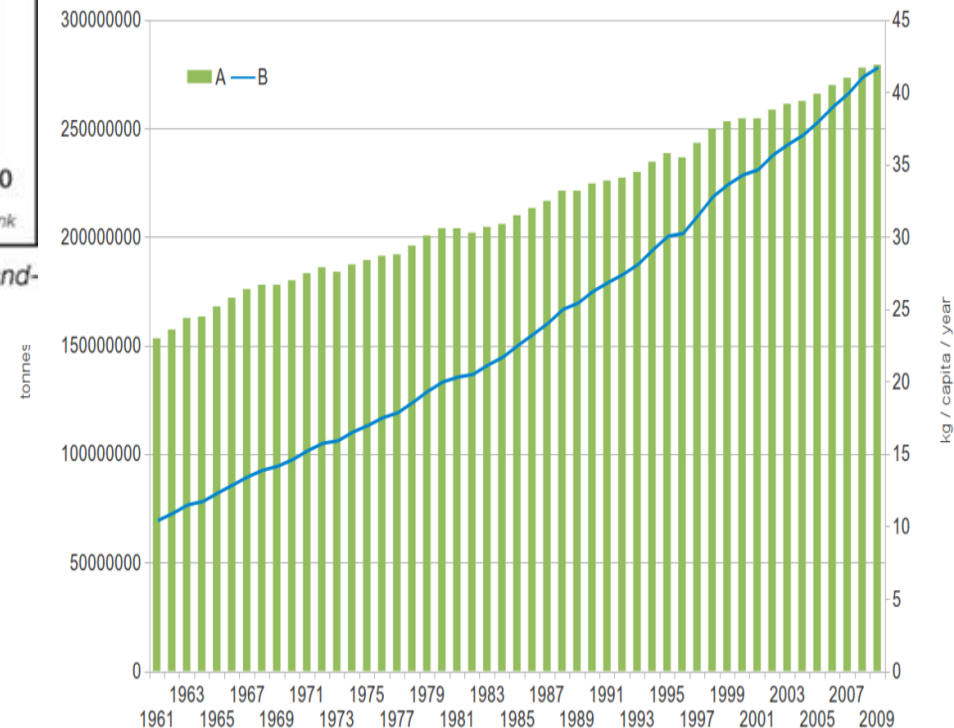
Inherent Land Quality Assessment



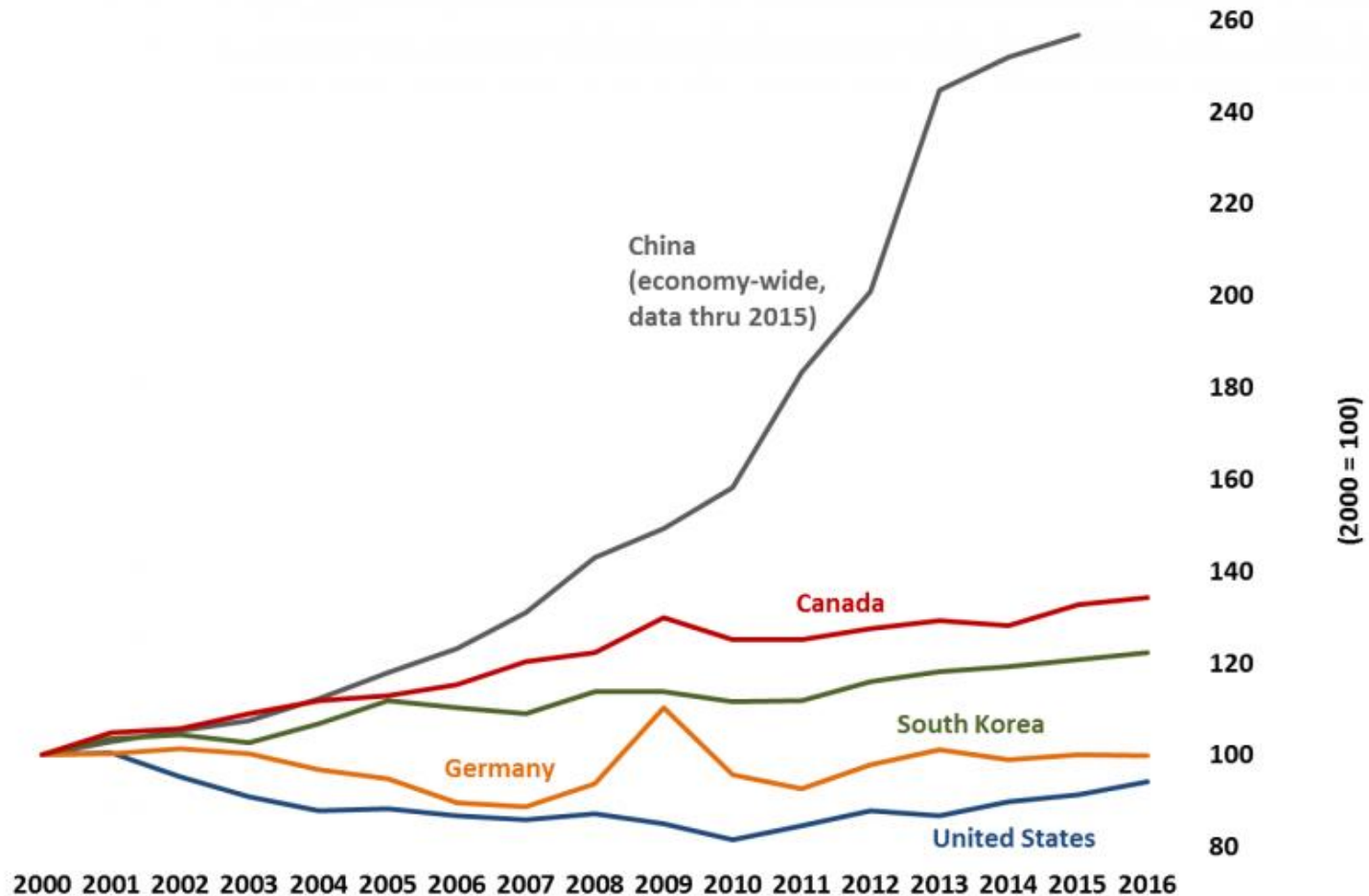
Protein Consumption



Growth in per capita meat consumption throughout Asia ranges from 8% to 42%. Branded meat products will begin to attract increasing interest in Asia's emerging markets.



Changing Asian Labor Market



US Demand & Trends

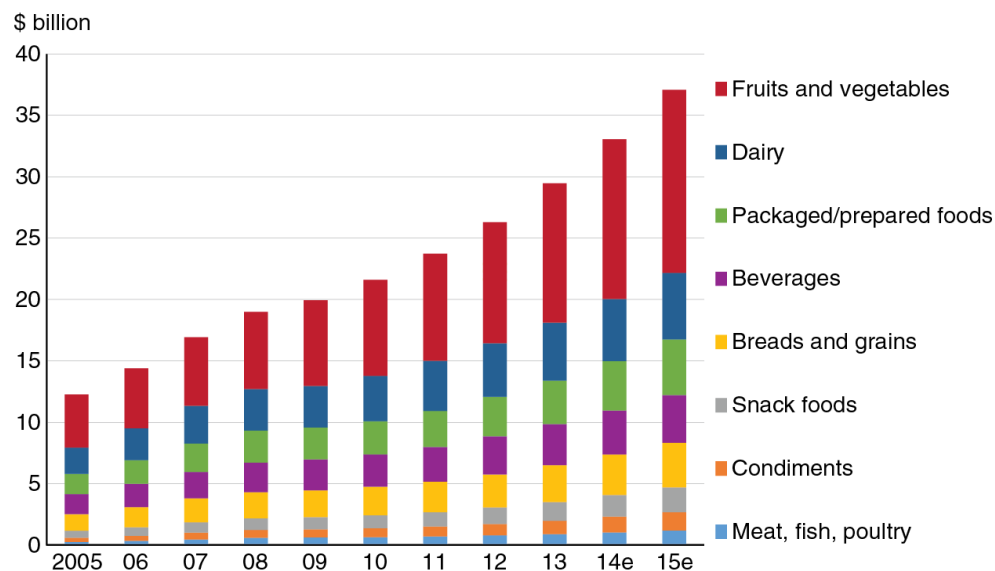
US All Wheat Planted Acreage



Most Recent: 45.70 As Of 09/12/2017

The Hightower Report

U.S. organic food retail sales, 2005-2015e—Fruits and vegetables are still the top category

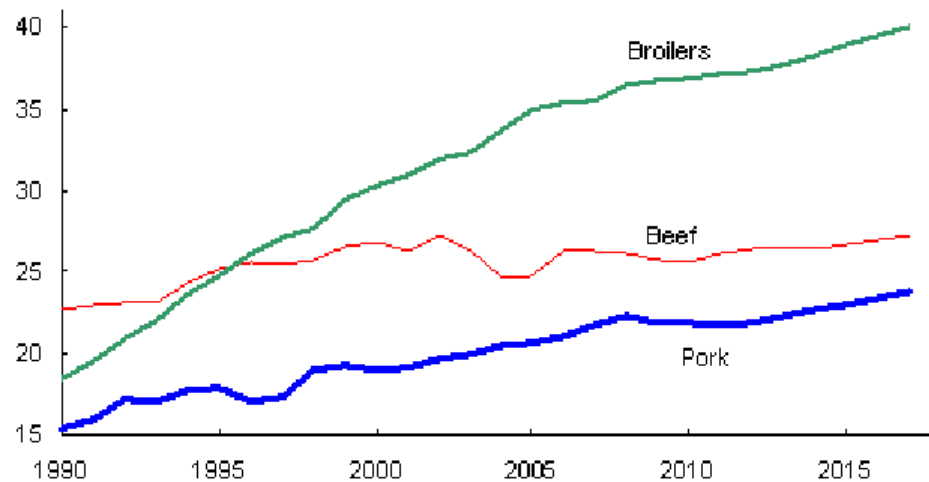


Note: e = estimated. NBJ estimates of U.S. organic food sales are typically somewhat lower than Organic Trade Association estimates.

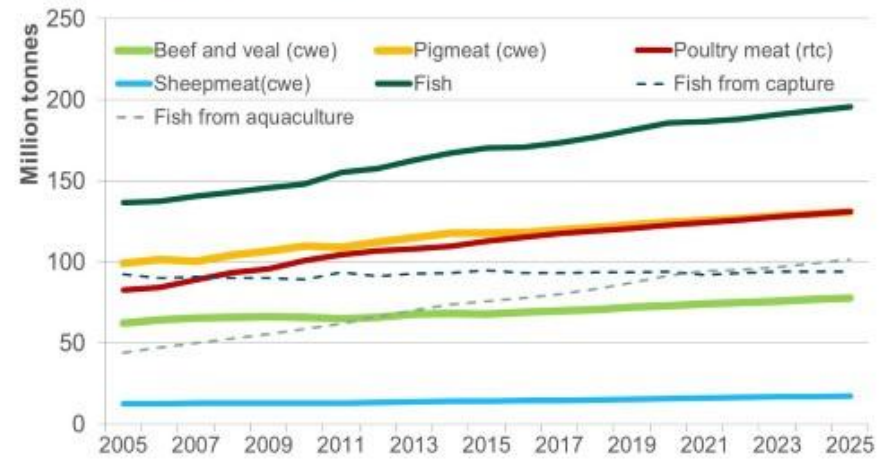
Source: USDA, Economic Research Service using data from Nutrition Business Journal (NBJ), 2015.

Meat Production Continues to Increase

Billion pounds



Global Production



Source: OECD-FAO

Corn Markets

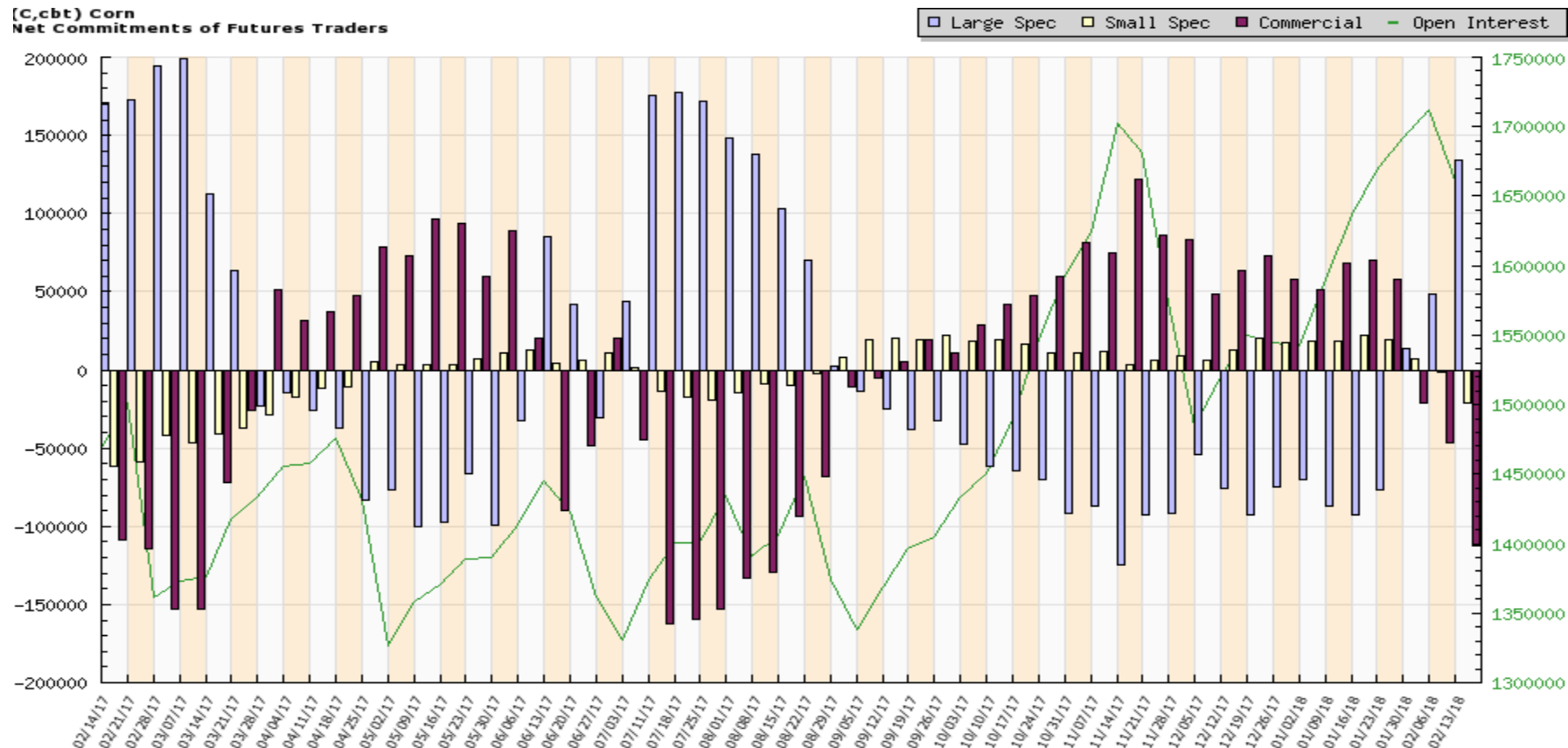


CBOT May, December Corn Contract



Corn Commitment for Traders Report

(C,cbt) Corn
Net Commitments of Futures Traders



Charts compiled by Software North <http://cotpricecharts.com/commitmentscurrent/>

--- Large Speculators ---				----- Commercial -----				-- Small Speculators --			Open	
#	Long	Short	Bullish	#	Long	Short	Bullish	Long	Short	Bullish	Intrest	
01/16/18	537	421,121	513,368	45%	630	738,188	667,781	53%	194707	172,867	53%	1,637,164
01/23/18	528	424,433	501,458	46%	643	761,842	703,674	52%	193536	174,679	53%	1,668,554
01/30/18	544	453,496	439,742	51%	639	744,186	765,198	49%	190624	183,366	51%	1,692,248
02/06/18	530	453,219	405,149	53%	653	762,426	809,131	49%	190449	191,814	50%	1,711,904
02/13/18	515	477,510	343,538	58%	642	725,429	838,202	46%	178490	199,689	47%	1,661,360

Soybean Markets

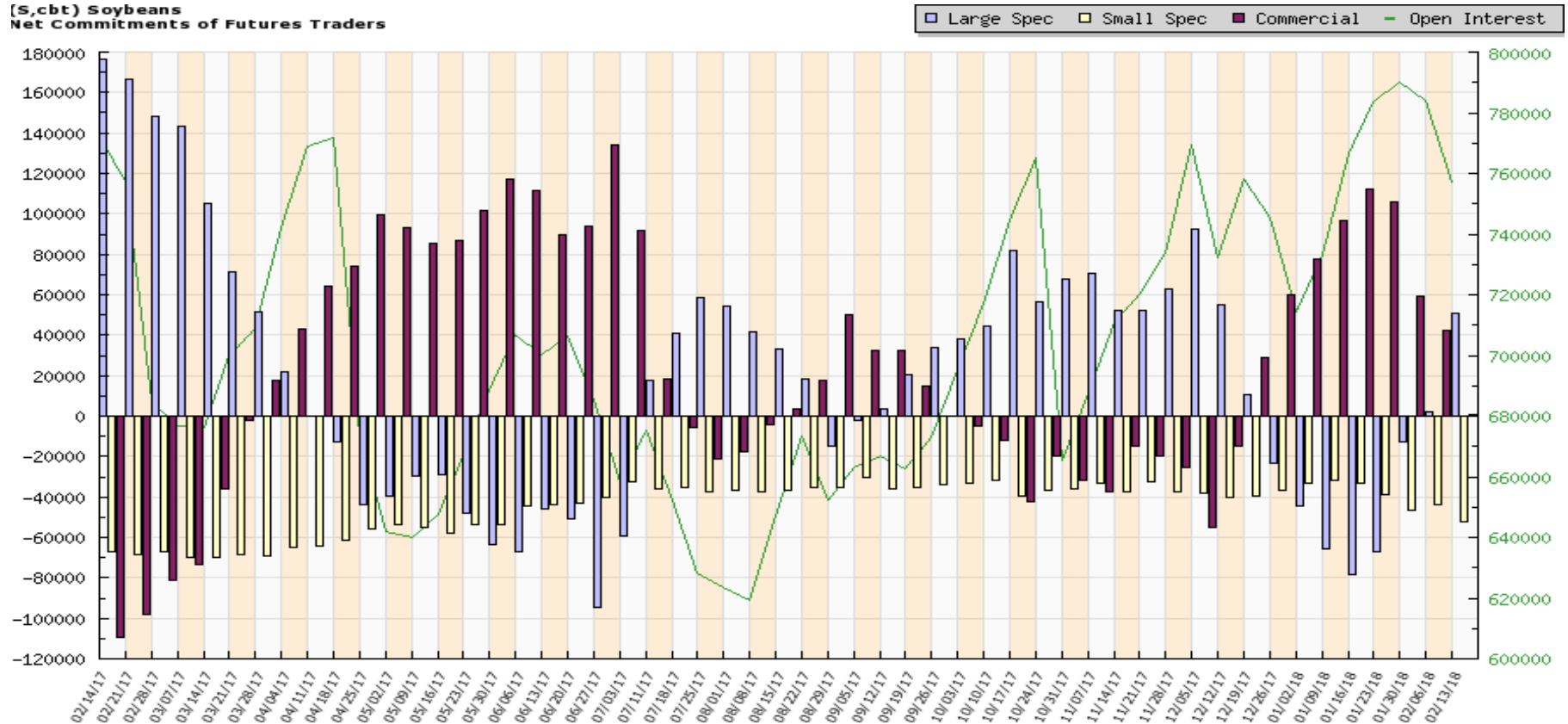


May, November Soybean Contract



Soybean Commitment of Traders Report

(S,c,bt) Soybeans
Net Commitments of Futures Traders



--- Large Speculators ---				----- Commercial -----				-- Small Speculators --			Open	
#	Long	Short	Bullish	#	Long	Short	Bullish	Long	Short	Bullish	Intrest	
01/16/18	466	151,657	230,305	40%	373	442,961	330,985	57%	51419	84,747	38%	766,686
01/23/18	493	146,676	213,766	41%	363	453,767	348,121	57%	50454	89,010	36%	783,339
01/30/18	472	154,286	167,085	48%	387	446,958	387,770	54%	49540	95,929	34%	790,223
02/06/18	464	150,800	148,907	50%	387	440,779	398,743	53%	52329	96,258	35%	784,222
02/13/18	465	167,012	115,849	59%	396	420,706	419,680	50%	47562	99,751	32%	757,288

Wheat Markets



May 2018 Chicago Wheat



Livestock Markets



April 2018 Live Cattle



March 2018 Feeder Cattle



Dairy Markets



March 2018 Class III Milk

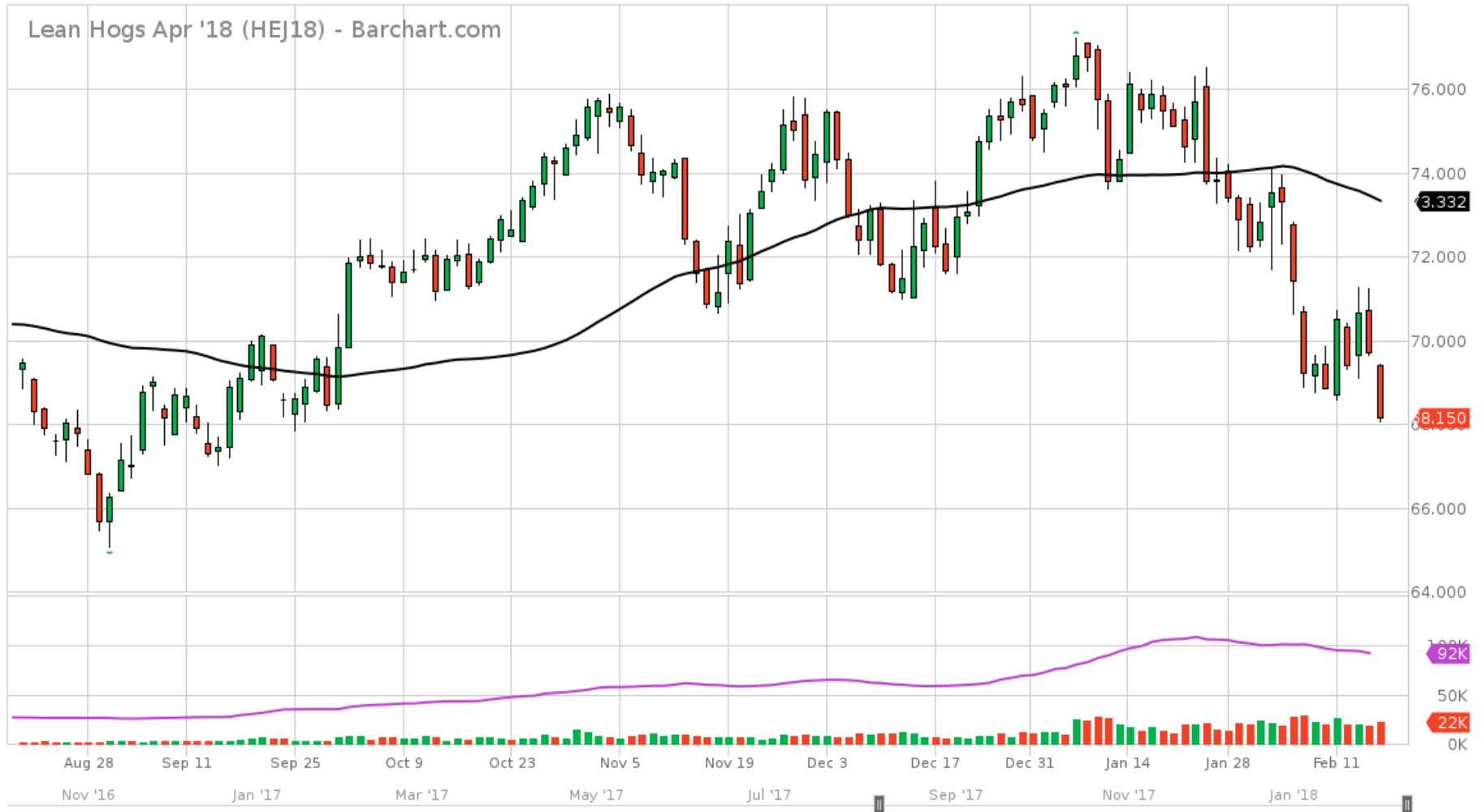
Class III Milk Mar '18 (DLH18) - Barchart.com



Pork Markets



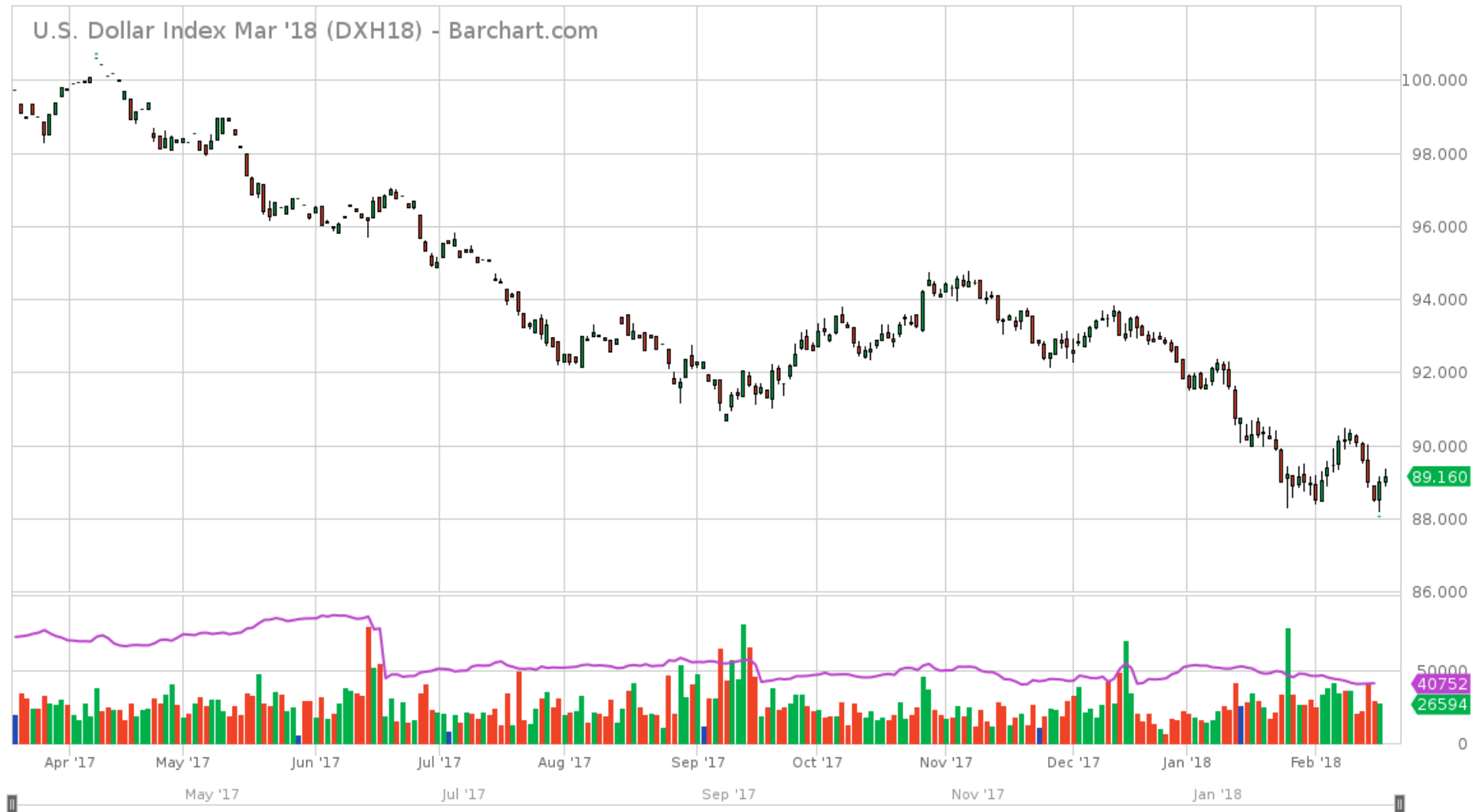
April 2018 Lean Hogs



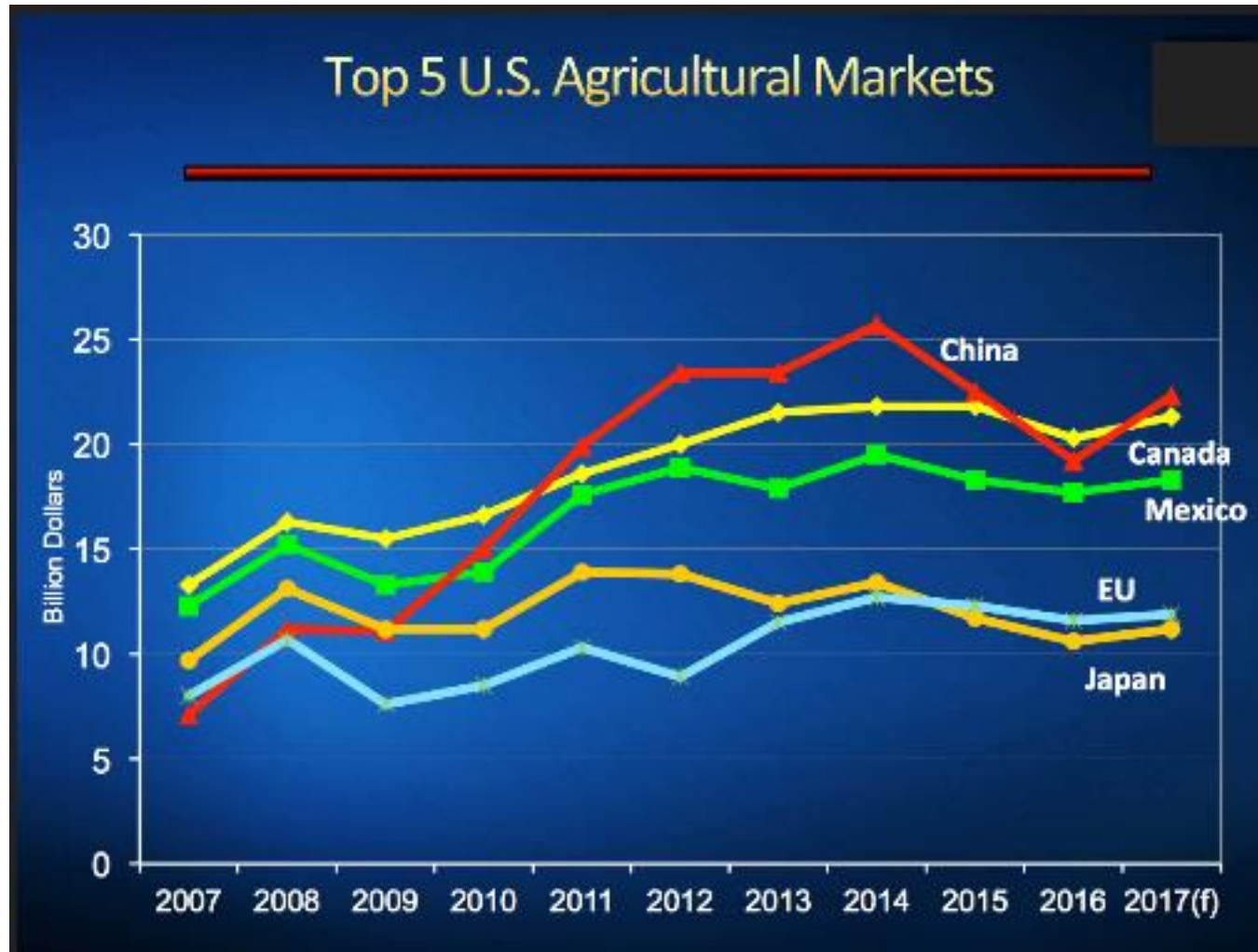
Farm Bill



US Dollar Strength Fades



Trade Policy



Small Things: Significant Risks

Alternative agricultural systems



What's on the Horizon?

Future of Ag: I believe...



Save the Date

2018 Commercial & Ag Lending Conference (CALC)

September 24 - 26, 2018 | Omaha, Nebraska

The must-attend event of the year!

Join us for industry insight, product solutions, networking, and training.



Registration will open soon!



© 2018 Moody's Corporation, Moody's Investors Service, Inc., Moody's Analytics, Inc. and/or their licensors and affiliates (collectively, "MOODY'S"). All rights reserved.

CREDIT RATINGS ISSUED BY MOODY'S INVESTORS SERVICE, INC. AND ITS RATINGS AFFILIATES ("MIS") ARE MOODY'S CURRENT OPINIONS OF THE RELATIVE FUTURE CREDIT RISK OF ENTITIES, CREDIT COMMITMENTS, OR DEBT OR DEBT-LIKE SECURITIES, AND MOODY'S PUBLICATIONS MAY INCLUDE MOODY'S CURRENT OPINIONS OF THE RELATIVE FUTURE CREDIT RISK OF ENTITIES, CREDIT COMMITMENTS, OR DEBT OR DEBT-LIKE SECURITIES. MOODY'S DEFINES CREDIT RISK AS THE RISK THAT AN ENTITY MAY NOT MEET ITS CONTRACTUAL, FINANCIAL OBLIGATIONS AS THEY COME DUE AND ANY ESTIMATED FINANCIAL LOSS IN THE EVENT OF DEFAULT. CREDIT RATINGS DO NOT ADDRESS ANY OTHER RISK, INCLUDING BUT NOT LIMITED TO: LIQUIDITY RISK, MARKET VALUE RISK, OR PRICE VOLATILITY. CREDIT RATINGS AND MOODY'S OPINIONS INCLUDED IN MOODY'S PUBLICATIONS ARE NOT STATEMENTS OF CURRENT OR HISTORICAL FACT. MOODY'S PUBLICATIONS MAY ALSO INCLUDE QUANTITATIVE MODEL-BASED ESTIMATES OF CREDIT RISK AND RELATED OPINIONS OR COMMENTARY PUBLISHED BY MOODY'S ANALYTICS, INC. CREDIT RATINGS AND MOODY'S PUBLICATIONS DO NOT CONSTITUTE OR PROVIDE INVESTMENT OR FINANCIAL ADVICE, AND CREDIT RATINGS AND MOODY'S PUBLICATIONS ARE NOT AND DO NOT PROVIDE RECOMMENDATIONS TO PURCHASE, SELL, OR HOLD PARTICULAR SECURITIES. NEITHER CREDIT RATINGS NOR MOODY'S PUBLICATIONS COMMENT ON THE SUITABILITY OF AN INVESTMENT FOR ANY PARTICULAR INVESTOR. MOODY'S ISSUES ITS CREDIT RATINGS AND PUBLISHES MOODY'S PUBLICATIONS WITH THE EXPECTATION AND UNDERSTANDING THAT EACH INVESTOR WILL, WITH DUE CARE, MAKE ITS OWN STUDY AND EVALUATION OF EACH SECURITY THAT IS UNDER CONSIDERATION FOR PURCHASE, HOLDING, OR SALE.

MOODY'S CREDIT RATINGS AND MOODY'S PUBLICATIONS ARE NOT INTENDED FOR USE BY RETAIL INVESTORS AND IT WOULD BE RECKLESS AND INAPPROPRIATE FOR RETAIL INVESTORS TO USE MOODY'S CREDIT RATINGS OR MOODY'S PUBLICATIONS WHEN MAKING AN INVESTMENT DECISION. IF IN DOUBT YOU SHOULD CONTACT YOUR FINANCIAL OR OTHER PROFESSIONAL ADVISER.

ALL INFORMATION CONTAINED HEREIN IS PROTECTED BY LAW, INCLUDING BUT NOT LIMITED TO, COPYRIGHT LAW, AND NONE OF SUCH INFORMATION MAY BE COPIED OR OTHERWISE REPRODUCED, REPACKAGED, FURTHER TRANSMITTED, TRANSFERRED, DISSEMINATED, REDISTRIBUTED OR RESOLD, OR STORED FOR SUBSEQUENT USE FOR ANY SUCH PURPOSE, IN WHOLE OR IN PART, IN ANY FORM OR MANNER OR BY ANY MEANS WHATSOEVER, BY ANY PERSON WITHOUT MOODY'S PRIOR WRITTEN CONSENT.

CREDIT RATINGS AND MOODY'S PUBLICATIONS ARE NOT INTENDED FOR USE BY ANY PERSON AS A BENCHMARK AS THAT TERM IS DEFINED FOR REGULATORY PURPOSES AND MUST NOT BE USED IN ANY WAY THAT COULD RESULT IN THEM BEING CONSIDERED A BENCHMARK.

All information contained herein is obtained by MOODY'S from sources believed by it to be accurate and reliable. Because of the possibility of human or mechanical error as well as other factors, however, all information contained herein is provided "AS IS" without warranty of any kind. MOODY'S adopts all necessary measures so that the information it uses in assigning a credit rating is of sufficient quality and from sources MOODY'S considers to be reliable including, when appropriate, independent third-party sources. However, MOODY'S is not an auditor and cannot in every instance independently verify or validate information received in the rating process or in preparing the Moody's publications.

To the extent permitted by law, MOODY'S and its directors, officers, employees, agents, representatives, licensors and suppliers disclaim liability to any person or entity for any indirect, special, consequential, or incidental losses or damages whatsoever arising from or in connection with the information contained herein or the use of or inability to use any such information, even if MOODY'S or any of its directors, officers, employees, agents, representatives, licensors or suppliers is advised in advance of the possibility of such losses or damages, including but not limited to: (a) any loss of present or prospective profits or (b) any loss or damage arising where the relevant financial instrument is not the subject of a particular credit rating assigned by MOODY'S.

To the extent permitted by law, MOODY'S and its directors, officers, employees, agents, representatives, licensors and suppliers disclaim liability for any direct or compensatory losses or damages caused to any person or entity, including but not limited to by any negligence (but excluding fraud, willful misconduct or any other type of liability that, for the avoidance of doubt, by law cannot be excluded) on the part of, or any contingency within or beyond the control of, MOODY'S or any of its directors, officers, employees, agents, representatives, licensors or suppliers, arising from or in connection with the information contained herein or the use of or inability to use any such information.

NO WARRANTY, EXPRESS OR IMPLIED, AS TO THE ACCURACY, TIMELINESS, COMPLETENESS, MERCHANTABILITY OR FITNESS FOR ANY PARTICULAR PURPOSE OF ANY SUCH RATING OR OTHER OPINION OR INFORMATION IS GIVEN OR MADE BY MOODY'S IN ANY FORM OR MANNER WHATSOEVER.

Moody's Investors Service, Inc., a wholly-owned credit rating agency subsidiary of Moody's Corporation ("MCO"), hereby discloses that most issuers of debt securities (including corporate and municipal bonds, debentures, notes and commercial paper) and preferred stock rated by Moody's Investors Service, Inc. have, prior to assignment of any rating, agreed to pay to Moody's Investors Service, Inc. for appraisal and rating services rendered by it fees ranging from \$1,500 to approximately \$2,500,000. MCO and MIS also maintain policies and procedures to address the independence of MIS's ratings and rating processes. Information regarding certain affiliations that may exist between directors of MCO and rated entities, and between entities who hold ratings from MIS and have also publicly reported to the SEC an ownership interest in MCO of more than 5%, is posted annually at www.moody's.com under the heading "Investor Relations — Corporate Governance — Director and Shareholder Affiliation Policy."

Additional terms for Australia only: Any publication into Australia of this document is pursuant to the Australian Financial Services License of MOODY'S affiliate, Moody's Investors Service Pty Limited ABN 61 003 399 657AFSL 336969 and/or Moody's Analytics Australia Pty Ltd ABN 94 105 136 972 AFSL 383569 (as applicable). This document is intended to be provided only to "wholesale clients" within the meaning of section 761G of the Corporations Act 2001. By continuing to access this document from within Australia, you represent to MOODY'S that you are, or are accessing the document as a representative of, a "wholesale client" and that neither you nor the entity you represent will directly or indirectly disseminate this document or its contents to "retail clients" within the meaning of section 761G of the Corporations Act 2001. MOODY'S credit rating is an opinion as to the creditworthiness of a debt obligation of the issuer, not on the equity securities of the issuer or any form of security that is available to retail investors. It would be reckless and inappropriate for retail investors to use MOODY'S credit ratings or publications when making an investment decision. If in doubt you should contact your financial or other professional adviser.

Additional terms for Japan only: Moody's Japan K.K. ("MJKK") is a wholly-owned credit rating agency subsidiary of Moody's Group Japan G.K., which is wholly-owned by Moody's Overseas Holdings Inc., a wholly-owned subsidiary of MCO. Moody's SF Japan K.K. ("MSFJ") is a wholly-owned credit rating agency subsidiary of MJKK. MSFJ is not a Nationally Recognized Statistical Rating Organization ("NRSRO"). Therefore, credit ratings assigned by MSFJ are Non-NRSRO Credit Ratings. Non-NRSRO Credit Ratings are assigned by an entity that is not a NRSRO and, consequently, the rated obligation will not qualify for certain types of treatment under U.S. laws. MJKK and MSFJ are credit rating agencies registered with the Japan Financial Services Agency and their registration numbers are FSA Commissioner (Ratings) No. 2 and 3 respectively.

MJKK or MSFJ (as applicable) hereby disclose that most issuers of debt securities (including corporate and municipal bonds, debentures, notes and commercial paper) and preferred stock rated by MJKK or MSFJ (as applicable) have, prior to assignment of any rating, agreed to pay to MJKK or MSFJ (as applicable) for appraisal and rating services rendered by it fees ranging from JPY200,000 to approximately JPY350,000,000.

MJKK and MSFJ also maintain policies and procedures to address Japanese regulatory requirements.